



Yuasa Scheda Tecnica

Yuasa 6N2A-2C - Convenzionali 6V Batteria

Prestazione

Tensione	6V
Capacità (10 ore)	2Ah
Capacità (20 ore)	2.1Ah

Dimensioni ($\pm 2\text{mm}$)

Lunghezza	70mm
Profondità	47mm
Altezza	106mm

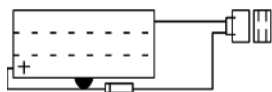
Pesi e Misure

Peso medio con acido	0.5kg
Volume dell'acido	0.1l

Tecnologia

Tecnologia	Piastra Sb/Sb
Separatore	Reinforcing fiber+Glass Fiber

Schema di Collegamento



Scheda tecnica prodotta su E&OE



Yuasa Technical Data Sheet

Yuasa 6N2A-2C - Conventional 6 Volt Battery

Performance

Voltage	6V
Capacity (10-hour)	2Ah
Capacity (20-hour)	2.1Ah

Dimensions ($\pm 2\text{mm}$)

Length	70mm
Width	47mm
Height	106mm

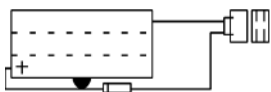
Weights & Measures

Mean Weight with Acid	0.5kg
Acid Volume	0.1l

Technology

Technology	Cast Sb/Sb
Separator	Reinforcing fiber+Glass Fiber

Cell Assembly Layout



Data Sheet generated on 08/09/2021 - E&OE