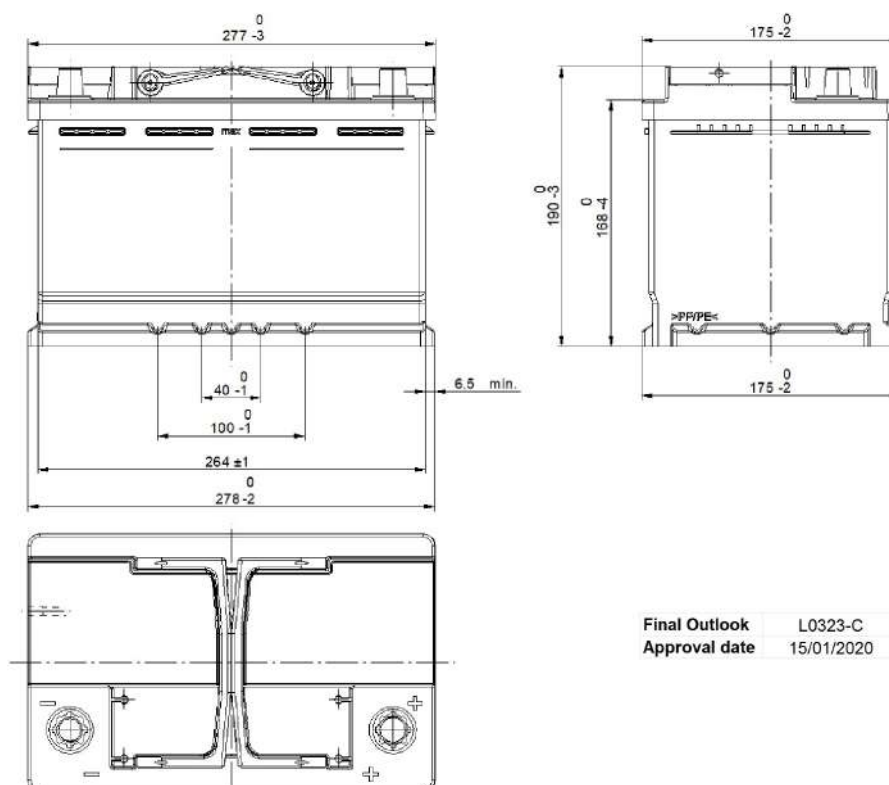


Central Article Code: L03089C23-C

Created: 12/03/2019

Local Code: TL700

Modified: 22/03/2021



PERFORMANCES

Voltage (V):	12 V
C20 (Ah):	70.0 20 h
Cranking (A):	760 EN
Charge:	WET
Technology:	Vented/Flooded
Grid:	Ca/Ca
Vibration:	V1 (30Hz+/-2Hz/3g/2h)
Endurance:	EN-EFB Requirement

STD. DIMENSIONS

Length (mm ± 2):	278
Width (mm ± 2):	175
Height (mm ± 2):	190
Total Weight (kg ± 5%):	19.30

All figures show nominal values. Tolerances are according to EN50342 and applicable European Regulations.

CONTAINER

Type:	L03	BLACK
Hold Down:	B13	
H.D. Adapter:	No	

COVER

Type:	Double with Integrat	BLACK
Polarity:	ETN 0	
Terminals:	EN taper post	
Terminal Adapter:	No	
SOCI:	No	
Ventilation:	Central	
Filter:	1 Filter at Left	
Lateral Plug:	No	

PLUGS

Type:	1 x Vent Sealed PSL-OE ha	BLACK
-------	---------------------------	-------

HANDLES

Type:	2 x PSL OE Integrated	BLACK
-------	-----------------------	-------

OTHERS

Degassing Tube:	No
-----------------	----

-