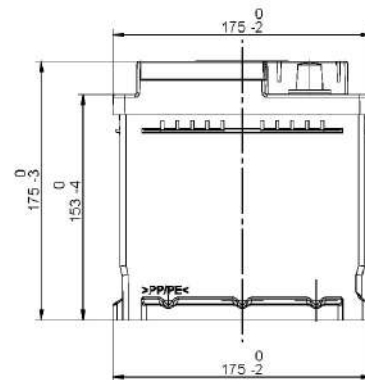
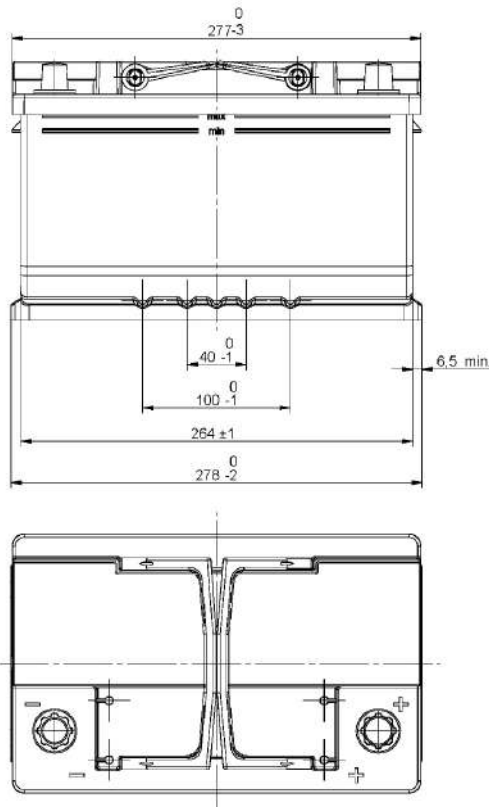


Central Article Code: LB3066C39-B

Created: 05/06/2013

Local Code: TL652

Modified: 31/07/2020



Final Outlook	LB339-B
Approval date	15/09/2012

## PERFORMANCES

Voltage (V):	12 V	
C20 (Ah):	65.0	20 h
Cranking (A):	650	EN
Charge:	WET	
Technology:	Vented/Flooded	
Grid:	Ca/Ca	
Vibration:	Manufactured Specific	
Endurance:	EN-EFB Requirement	

## STD. DIMENSIONS

Length (mm ± 2):	278
Width (mm ± 2):	175
Height (mm ± 2):	175
Total Weight (kg ± 5%):	16.20

All figures show nominal values. Tolerances are according to EN50342 and applicable European Regulations.

## CONTAINER

Type:	LB3	BLACK
Hold Down:	B13	
H.D. Adapter:	No	

## COVER

Type:	Double with Integrat	BLACK
Polarity:	ETN 0	
Terminals:	EN taper post	
Terminal Adapter:	No	
SOCI:	No	
Ventilation:	Central	
Filter:	1 Filter at Right	
Lateral Plug:	No	

## PLUGS

Type:	1 x Vent Sealed PSL-OE ha	BLACK
-------	---------------------------	-------

## HANDLES

Type:	2 x PSL OE Integrated	BLACK
-------	-----------------------	-------

## OTHERS

Degassing Tube:	No
-----------------	----