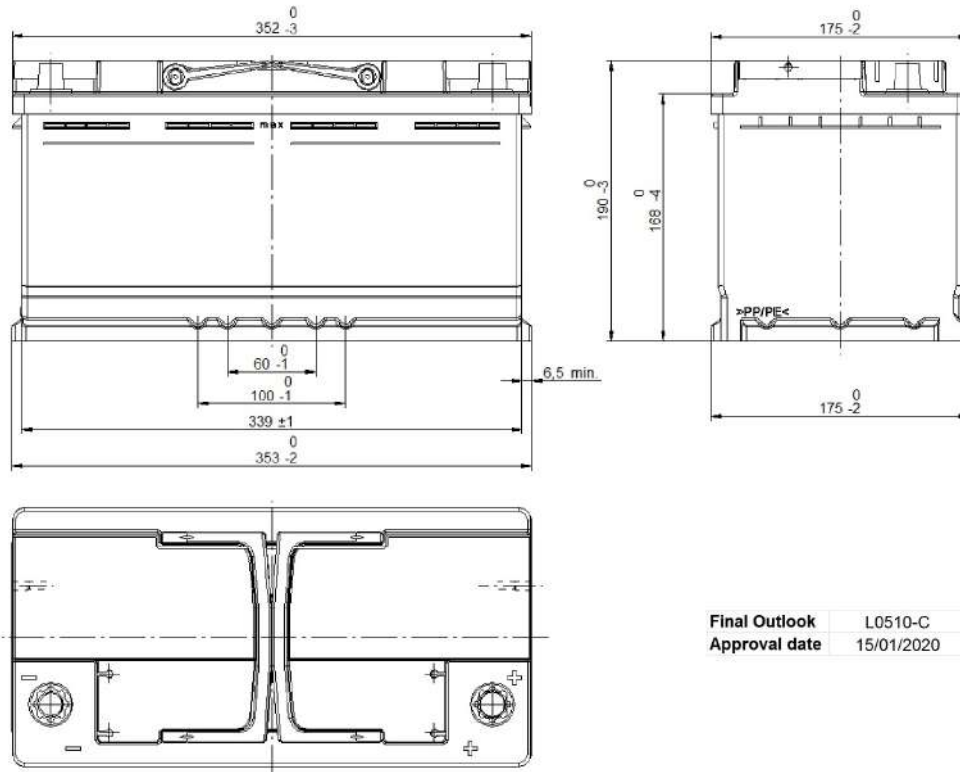


Central Article Code: L05097C10-C
 Local Code: TL1000

Created: 25/07/2019
 Modified: 22/02/2021



PERFORMANCES		CONTAINER	
Voltage (V):	12 V	Type:	L05 BLACK
C20 (Ah):	100.0 20 h	Hold Down:	B13
Cranking (A):	900 EN	H.D. Adapter:	No
Charge:	WET	COVER	
Technology:	Vented/Flooded	Type:	Double with Integrat BLACK
Grid:	Ca/Ca	Polarity:	ETN 0
Vibration:	V1 (30Hz+/-2Hz/3g/2h)	Terminals:	EN taper post
Endurance:	EN-EFB Requirement	Terminal Adapter:	No
		SOCI:	No
		Ventilation:	Central
		Filter:	2 Filters
		Lateral Plug:	Standard Right side BLACK shape
STD. DIMENSIONS		PLUGS	
Length (mm ± 2):	353	Type:	1 x Vent Sealed PSL-OE ha BLACK
Width (mm ± 2):	175	HANDLES	
Height (mm ± 2):	190	Type:	2 x PSL OE Integrated BLACK
Total Weight (kg ± 5%):	25.50	OTHERS	
		Degassing Tube:	No

All figures show nominal values. Tolerances are according to EN50342 and applicable European Regulations.