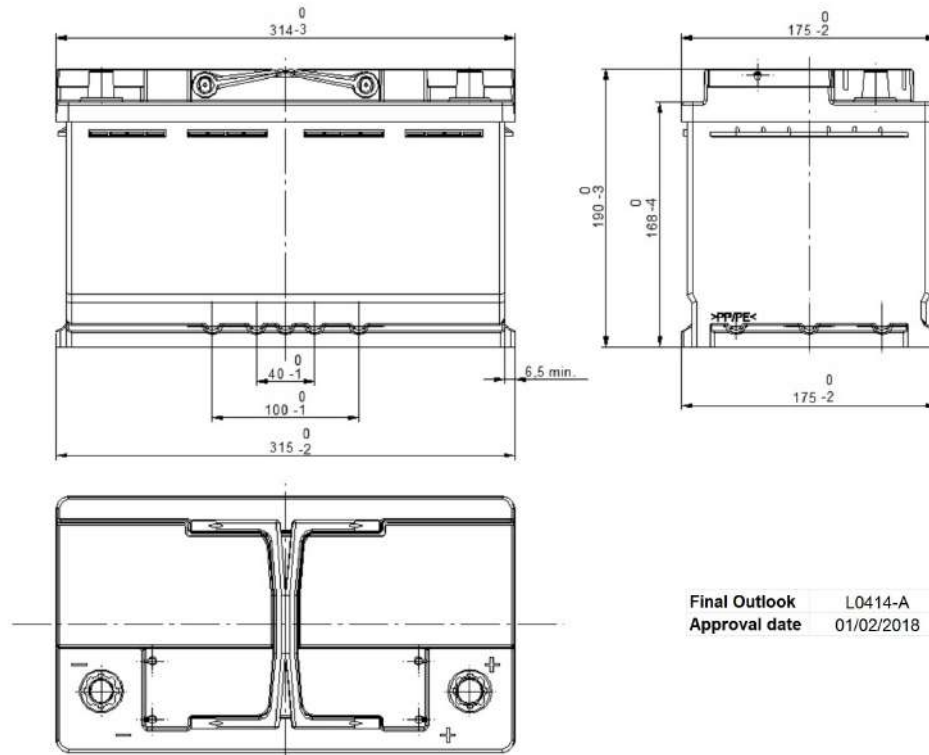


Central Article Code: L04076C14-A
 Local Code: EL800

Created: 02/02/2018
 Modified: 22/03/2021



PERFORMANCES		CONTAINER	
Voltage (V):	12 V	Type:	L04 BLACK
C20 (Ah):	80.0 20 h	Hold Down:	B13
Cranking (A):	800 EN	H.D. Adapter:	No
Charge:	WET	COVER	
Technology:	Vented/Flooded	Type:	Double with Integrat BLACK
Grid:	Ca/Ca	Polarity:	ETN 0
Vibration:	Manufactured Specific	Terminals:	EN taper post
Endurance:	VW Requirement (MHF)	Terminal Adapter:	No
STD. DIMENSIONS		SOCI:	No
		Ventilation:	Central
		Filter:	1 Filter at Left
		Lateral Plug:	No
		PLUGS	
OTHERS		Type:	1 x Vent Sealed PSL-OE ha BLACK
		HANDLES	
		Type:	2 x PSL OE Integrated BLACK
		Degassing Tube:	No

All figures show nominal values. Tolerances are according to EN50342 and applicable European Regulations.