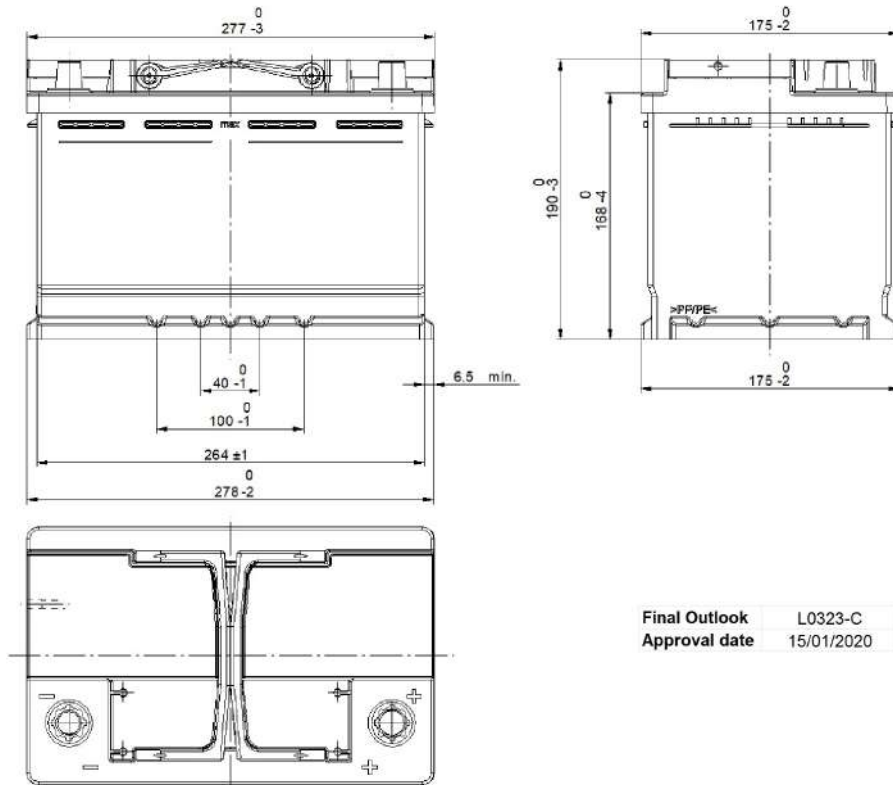


Central Article Code: L03089C23-C
 Local Code: EL700

Created: 12/03/2019
 Modified: 22/03/2021



Final Outlook L0323-C
 Approval date 15/01/2020

PERFORMANCES		CONTAINER	
Voltage (V):	12 V	Type:	L03 BLACK
C20 (Ah):	70.0 20 h	Hold Down:	B13
Cranking (A):	760 EN	H.D. Adapter:	No
Charge:	WET	COVER	
Technology:	Vented/Flooded	Type:	Double with Integrat BLACK
Grid:	Ca/Ca	Polarity:	ETN 0
Vibration:	V1 (30Hz+/-2Hz/3g/2h)	Terminals:	EN taper post
Endurance:	EN-EFB Requirement	Terminal Adapter:	No
STD. DIMENSIONS		SOCI:	No
		Ventilation:	Central
		Filter:	1 Filter at Left
		Lateral Plug:	No
		PLUGS	
Length (mm ± 2): 278		Type:	1 x Vent Sealed PSL-OE ha BLACK
Width (mm ± 2): 175		HANDLES	
Height (mm ± 2): 190		Type:	2 x PSL OE Integrated BLACK
Total Weight (kg ± 5%): 19.30		OTHERS	
All figures show nominal values. Tolerances are according to EN50342 and applicable European Regulations.		Degassing Tube:	No
		-	