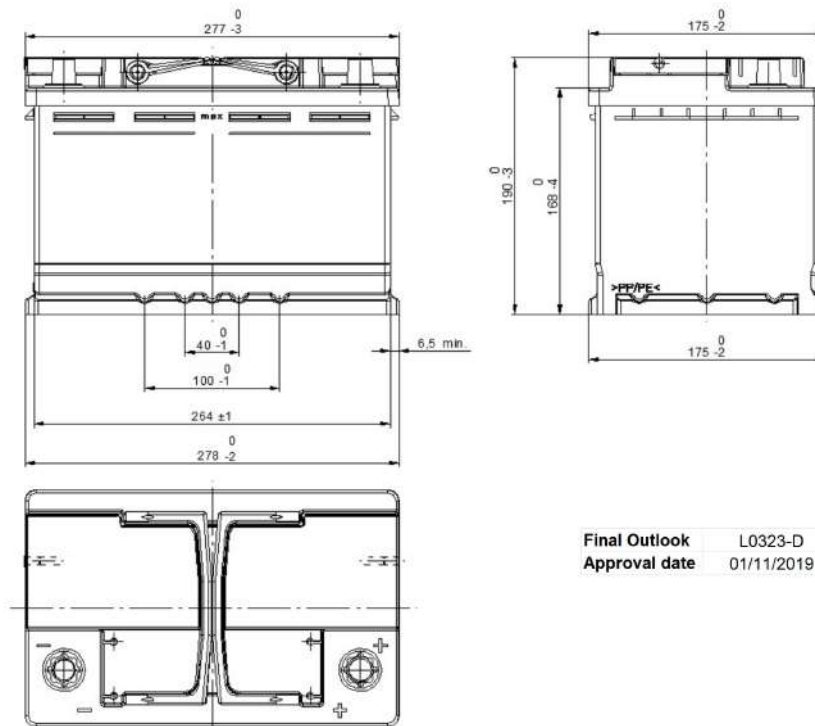


Central Article Code: L03078C23-D  
 Local Code: EA770

Created: 24/02/2020  
 Modified: 07/02/2022



PERFORMANCES		CONTAINER				
Voltage (V):	12 V	Type:	L03	BLACK		
C20 (Ah):	77.0      20 h	Hold Down:	B13			
Cranking (A):	760      EN	H.D. Adapter:	No			
Charge:	WET	<b>COVER</b>				
Technology:	Vented/Flooded	Type:	Double with Integrat	BLACK		
Grid:	Ca/Ca	Polarity:	ETN 0			
Vibration:	V1 (30Hz+/-2Hz/3g/2h)	Terminals:	EN taper post			
Endurance:	E2 (90 cycles@50%)	Terminal Adapter:	No			
<b>STD. DIMENSIONS</b>		SOCI:	No			
Length (mm ± 2):	278	Ventilation:	Central			
Width (mm ± 2):	175	Filter:	2 Filters			
Height (mm ± 2):	190	Lateral Plug:	Standard	Left side	BLACK	
Total Weight (kg ± 5%):	17.50	<b>PLUGS</b>				
All figures show nominal values. Tolerances are according to EN50342 and applicable European Regulations.		Type:	1 x Vent Sealed PSL-OE ha BLACK			
		<b>HANDLES</b>				
		Type:	2 x PSL OE Integrated BLACK			
		<b>OTHERS</b>				
		Degassing Tube:	No			