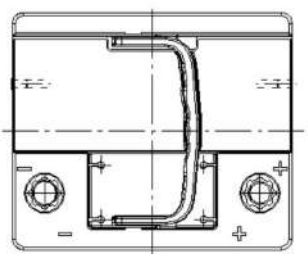
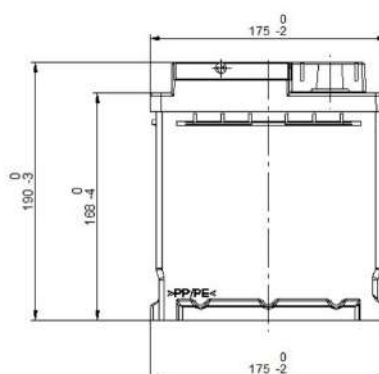
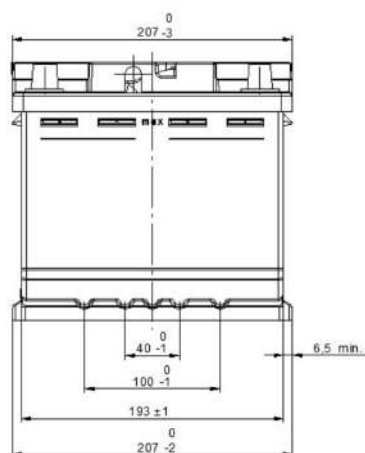


Central Article Code: L01054C18-C

Created: 24/02/2020

Local Code: EA530

Modified: 22/01/2021



Final Outlook L0118-C  
Approval date 01/11/2019

## PERFORMANCES

Voltage (V):	12 V
C20 (Ah):	53.0 20 h
Cranking (A):	540 EN
Charge:	WET
Technology:	Vented/Flooded
Grid:	Ca/Ca
Vibration:	V1 (30Hz+/-2Hz/3g/2h)
Endurance:	E2 (90 cycles@50%)

## STD. DIMENSIONS

Length (mm ± 2):	207
Width (mm ± 2):	175
Height (mm ± 2):	190
Total Weight (kg ± 5%):	12.80

All figures show nominal values. Tolerances are according to EN50342 and applicable European Regulations.

## CONTAINER

Type:	L01	BLACK
Hold Down:	B13	
H.D. Adapter:	No	

## COVER

Type:	Double with Integrat	BLACK
Polarity:	ETN 0	
Terminals:	EN taper post	
Terminal Adapter:	No	
SOCI:	No	
Ventilation:	Central	
Filter:	2 Filters	
Lateral Plug:	Standard	Left side BLACK shape

## PLUGS

Type:	1 x Vent Sealed PSL-OE ha	BLACK
-------	---------------------------	-------

## HANDLES

Type:	1 x PSL OE Integrated	BLACK
-------	-----------------------	-------

## OTHERS

Degassing Tube:	No
-----------------	----